

State of Wyoming Corner Record

(In compliance with the *CORNER PERPETUATION AND PILING ACT*, Wyoming Statutes, 1997 Section 33-29-140 et. seq., and the Rules and Regulations of the Board of Professional Engineers and Professional Land Surveyors)

Reverse side of this form may be used if more space is needed.

Record of original survey and citation of source of historical information (if corner is lost or obliterated). Description of corner monumentation evidence found and/or monument and accessories established to perpetuate the location of this corner. Sketch of relative location of monument, accessories, and reference points with course and distance to adjacent corner(s) (if determined in this survey). Method and rationale for reestablishment of lost or obliterated corner.

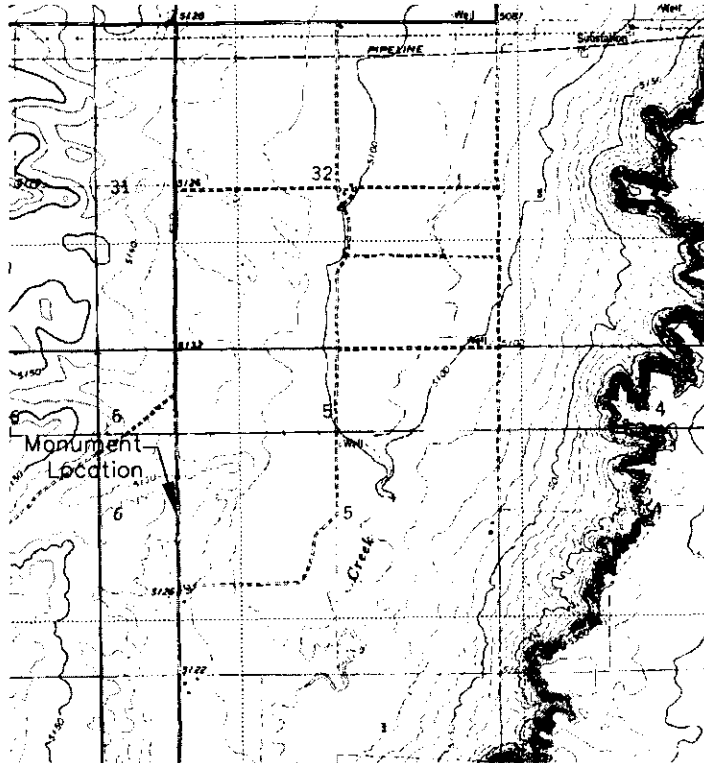
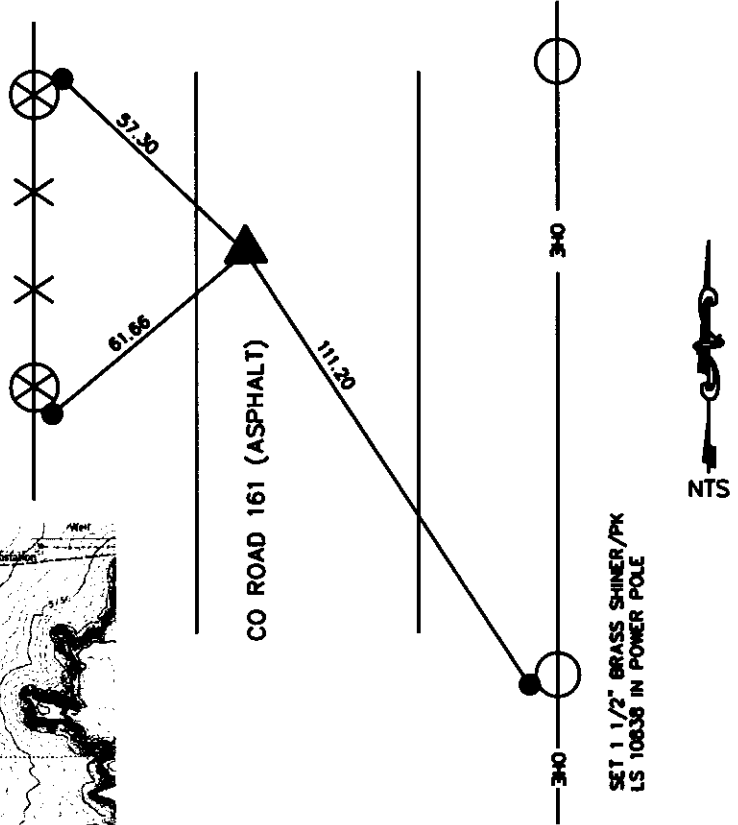
FOUND: NOTHING

SET 1 1/2" BRASS SHINER/PK
IN FENCE POST LS 10838

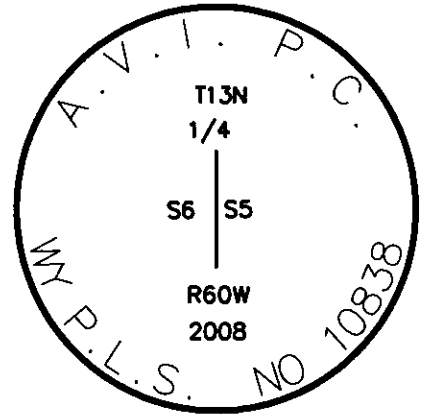
SET: 3 1/4" ALUMINUM CAP
30" NO. 6 REBAR

N 00° 01' 35"E 2601.56' TO NW SEC. 5
S 00° 01' 36"W 2627.83' TO SW SEC. 5

SET 1 1/2" BRASS SHINER/PK
IN FENCE POST LS 10838



Monument location



Monument Inscription

Date of Field Work: 6/19/08

Office Reference: 2908

Cross Index Plat

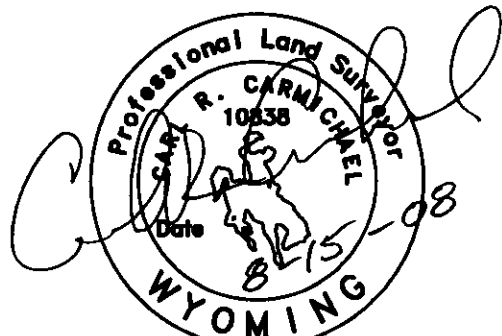
	1	2	3	4	5	6	7	8	9	10	11	12	13	14	15	16	17	18	19	20	21	22	23	24	25
A																									
B																									
C																									
D																									
E																									
F																									
G																									
H																									
J																									
K																									
L																									
M																									
N																									
O																									
P																									
Q																									
R																									
S																									
T																									
U																									
V																									
W																									
X																									
Y																									
Z																									

Firm/Agency, Address: AVI P.C.
2035 WESTLAND RD.
CHEYENNE, WY. 82001

Telephone Number: 307-637-6017

This corner record was prepared by me or under my direction and supervision.

SEAL & SIGNATURE



RECORDED 8/15/2008 AT 11:12 AM REC# 505887 JK# 2071 PG# 1379
 DEBRA K. LATHROP, CLERK OF LARAMIE COUNTY, WY PAGE 1 OF 1